



YEAR 12 STUDENT INDUCTION

SHAPE YOUR FUTURE



ST BRENDAN'S
SIXTH FORM COLLEGE

**Congratulations on your
GCSE results!**



WELCOME TO YOUR FIRST WEEK!



Marian Curran
Principal



David Beesley
Vice Principal



Vicki Haigh
Acting Assistant Principal



Tanya Schottlander
Head of Student
Wellbeing & Progress



Bea Honap-Baker
Director of Faculty



Jayne Manley
Director of Faculty



Sophie Preece
Director of Faculty



Your Future Starts Today!

**Where will you be in
5 years' time?**

What We Want For You

- Examination success – the very best grades
- New opportunities for your future
- Independence and personal development
- Happiness and enjoyment.





A Level & BTEC Results Day 2025



Individual Success



A* Chemistry
A* Maths
A* Maths (Further)
A* Physics



A* Computer Science
A* Maths
A* Maths (Further)
A* Psychology



A* Biology
A* Psychology
A* Sociology



A* Chemistry
A* Maths
A* Maths (Further)
A Physics



A* English Literature
A History
A* Media Studies



A* Accounting
A* Business
A* Maths



A* Art (Photography)
A* Art (Textiles)
A History



A* Biology
A Chemistry
A Maths

27 students
Achieved 3 or 4
A*/A Grades



B French
A* Government & Politics
B Sociology [Progress 4.40]

The background is a solid purple color with several large, overlapping, organic shapes in a lighter shade of purple. These shapes are positioned primarily on the right side of the image, creating a sense of depth and movement. The text is centered on the left side of the image.

**What makes a successful
Sixth Form College student?**

Strong Work Ethic & Independence

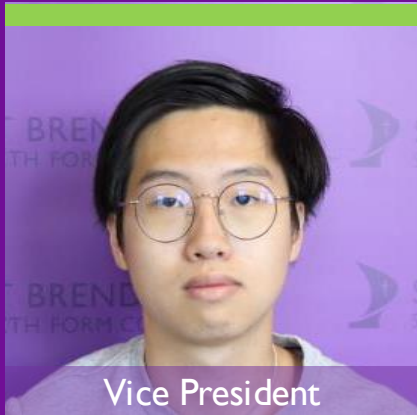
- Sixth Form is a step up from GCSEs — you're expected to take ownership of your learning.
- Successful students stay on top of deadlines, revise consistently (not just before exams), and make use of study periods effectively.

1

What we offer

- Flexibility and accountability!
- Study periods
- Freedom within social spaces
- No school uniform!
- Freedom to be responsible for your own learning
- Freedom to work with staff outside formal lessons
- Freedom to help make decisions, e.g. Student Union and Student feedback





Vice President

Jasper Chu



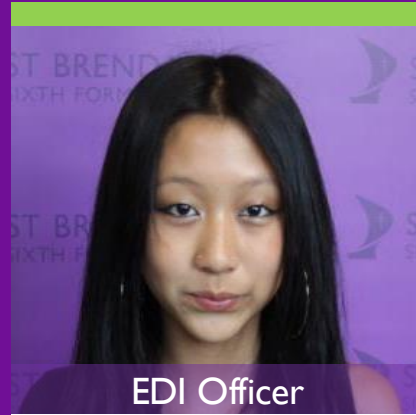
President

Cassie Hogg



Communication Officer

Owen Joyce



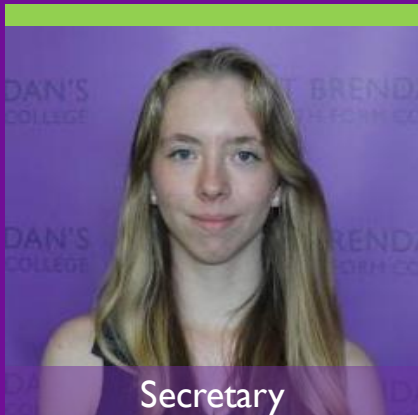
EDI Officer

Evie Lau



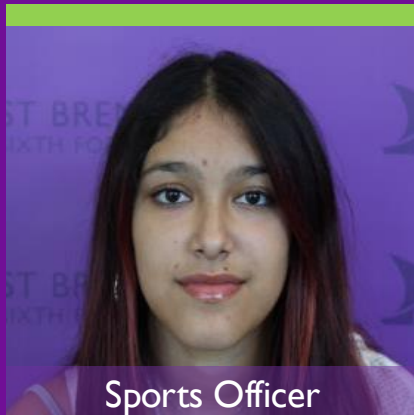
Health & Well Being

Caitlin Street



Secretary

Kira Veal



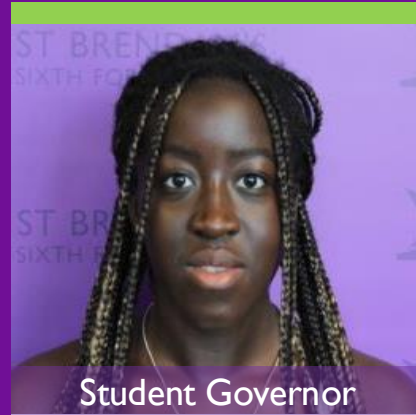
Sports Officer

Yara Benitez



Sports Officer

Oskar Pycroft



Student Governor

Ramatu Hassan-King



Sustainability & Student Life

Erika Storer

Student Union 25/26

Target Grades

We have already calculated your **average GCSE points** score:

A-level

GCSE Score	Target Grade
7.75-9.00	A*/A
7.00 = < 7.75	A
6.55 = 7.00	B
6.10 = < 6.55	B
5.65 = < 6.10	B/C
5.21 = < 5.65	B/C
4.77 = < 5.21	C
4.37 = < 4.77	C

BTEC

GCSE Score	Target Grade
6.00+	D*D
5.28 = < 6.00	DD
4.90 = < 5.28	DM
4.62 = < 4.90	DM
4.37 = < 4.62	MM
4.13 = < 4.37	MM
3.89 = < 4.13	MM
3.62 = < 3.89	MM

Students with different points scores get different results but students with the same point scores also can produce different results.

Who Are You Going To Be?



Fatimah

Target Grades – C,C,C



Aisha

Target Grades – C,C,C

Fatimah

- Mostly 5s at GCSE
- Rarely seen in the library
- Tried to avoid getting involved in clubs or societies
- Had poor attendance at 89%
- Sometimes didn't do her homework
- Sometimes late for lessons
- Had a part-time job in a supermarket for 15 hours a week



Aisha

- Came to college with mostly 5s at GCSE with some 4s
- Made full use of all the study facilities at college
- Got involved in debating society
- Had excellent attendance – 98%
- Worked extremely hard
- Was never late for lessons
- Asked for help when she needed it
- Had a part time job for 8 hours on Sunday.



Who Are You Going To Be?



Fatimah

Target Grades – C,C,C

Outcome – Grades **D | E | E**



Aisha

Target Grades – C,C,C

Outcome – Grades **A | A | B**



60 WEEKS

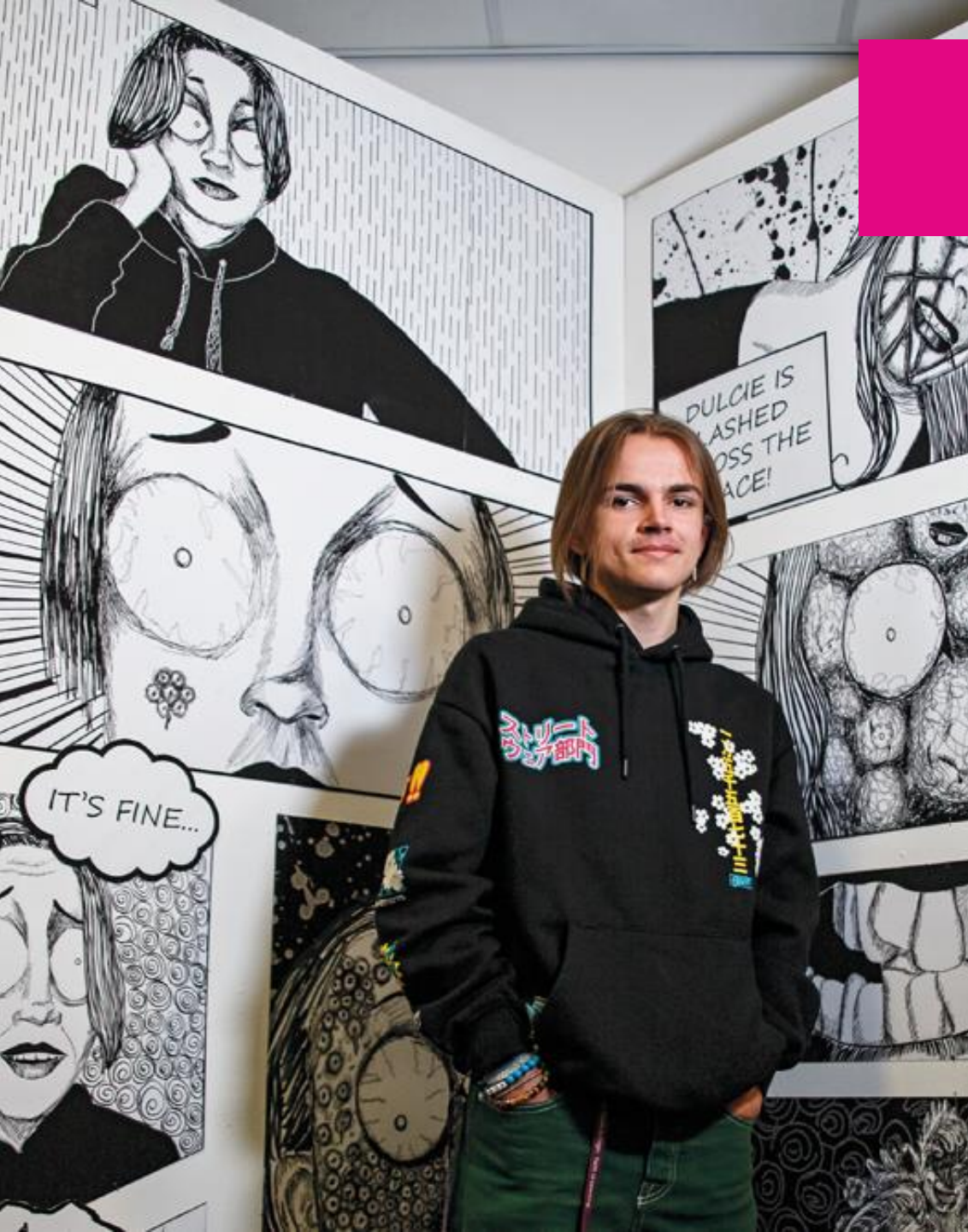
is the number of weeks you have at St Brendan's on a Level 3 programme

- Time flies!
- Year 12 Progression criteria for entry into Year 13.
 - +85% attendance
 - Good-strong progress in courses
 - Positive engagement, behaviour and commitment to learning



9 Keys to Success

1. Study hard & aim high
2. Attend 100% of your classes & be on time
3. Behave appropriately and treat everyone with respect
4. Bring the right equipment to college
5. Only book holiday outside of term time



9 Keys to Success

- 6. Be proud of your work and & meet deadlines
- 7. Limit your part-time work to 8 hours per week
- 8. Engage in Enrichment activities & get involved!
- 9. Create a safe environment:
Wear your lanyard and ID Badge!

A Culture of Positive Engagement...The 3 C's

CONNECTEDNESS

- Ensuring students have a sense of belonging and connectedness to their environment. An environment that is 'safe' for you all to grow and develop.
- Your behaviour and approach to decision making is key

COMMUNICATION

- Ensuring students are communicated with effectively, with respect and with consistency
- Our expectations are clear and consistent – you may not get it right first time, but we will support you to correct mistakes and learn from them

CHOICE MAKING

- Ensuring students experience a sense of control of their circumstances through choice making opportunities.

Student Expectations

- Our expectations are to treat you like a young adult and an individual
- Your expectations are to be on time, if you are late, knock and wait
- Lanyards must be worn at all times – staff and students
- Phones and headphones out of sight in lessons *(unless permission has been given)*
- Only water in the classroom and fill up bottles beforehand
- Behaviour is exemplary, at all times – no excuses
- Treat everyone with respect
- Aim to use the toilet at break and lunchtimes rather than during lessons, if you do leave the classroom – phones are left and lanyards are on.

Student Expectations

- Students will do around 4-5 hours independent study per subject per week

- MADE UP OF THREE ELEMENTS :

FLIPPED LEARNING

Reading / watching videos / preparation work for lessons

CORE TASKS

Practice tasks: questions / essays / presentations / assignments / projects

DIRECTED IMPROVEMENT WORK (DIRT)

Actions necessary to achieve your targets.

Pyramid of Success



**A STUDENT ON A 3 COURSE
PROGRAMME WILL COMPLETE:**

- 15 hours lessons
 - 4.5 hours per subject
 - 1.5 hours tutorial and Religion, Philosophy & Ethics (RPE)
- 15 hours independent study

This leaves plenty of time for a sensible amount of part-time work (up to 8 hours)

Why is ATTENDANCE so important?

When a student misses just...	That equals...	Student's attendance will be...	Grade
1 day each fortnight	16.5 days per year	90%	1 grades below target
1 day a week	33 days per year	80%	2 below target

Give yourself a chance to succeed...

A day here or there does not seem much but every day counts.

Why is PUNCTUALITY so important?

If a student is late by.....	Each week that equals...	Which is...
1 minute each lesson	20 minutes of learning lost	Nearly 2 days a year
10 minutes each day	50 minutes of learning lost	4 days a year
20 minutes each day	1 hr 40 mins of learning lost	8 days a year

Give yourself a chance to succeed...

Every minute counts

ATTENDANCE FOCUS – times have changed...

Attendance Band	Action
93-85%	Check in with teachers and tutors
85-75%	More detailed check in, SMART Targets and catch-up plan (including additional timetabled sessions); removal of enrichment and aspects of bursary
75-65%	Serious Concern: Panel Review and final warning meeting. Attendance contract and supervised study. Removal of bursary*
Below 65%	Withdrawal from college

College is a safe place to be.

Abuse and harassment is unacceptable and will not be tolerated.

Let's have the conversation.



If you are worried about any of these issues please speak to your Personal Progress Tutor.

WHO CAN HELP YOU?



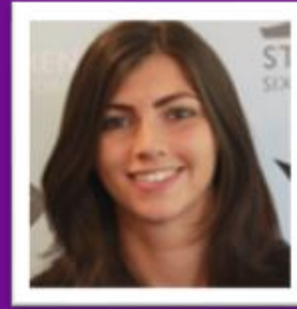
TANYA



VICKI



MICHELLE



KATY



LYNNE



SENSI



ELISHA



SARAH



CLARE



ZOE



CARLA

Student Support



- Progress Tutors
- Careers
- Inclusive Learning
- Welfare
- College Nurse
- Student Welfare & Engagement Assistants
- Safeguarding
- Prevent
- Bursary
- Transport
- Free college meals
- Academic support
- Chaplain



Induction to college

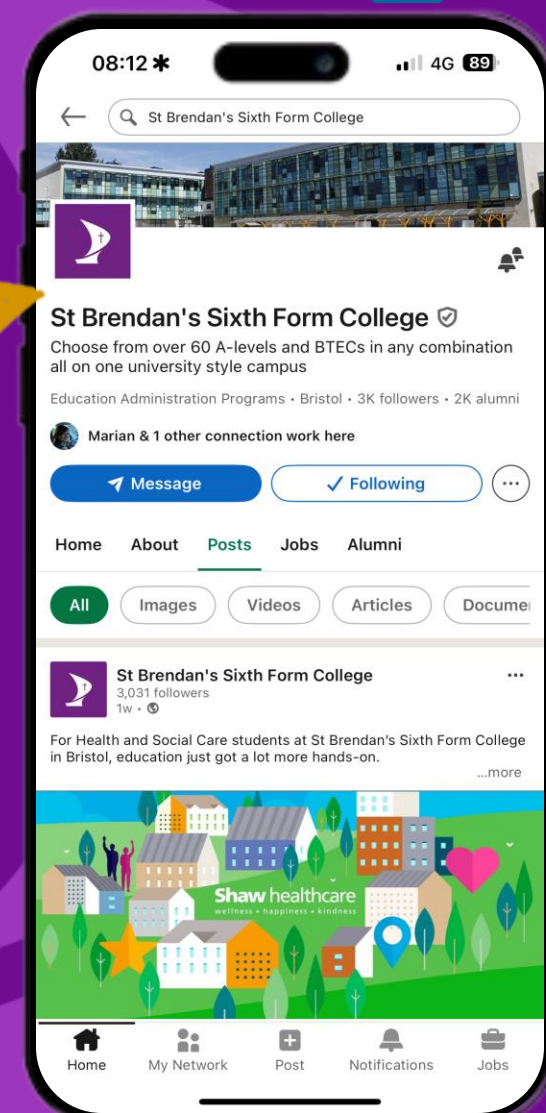
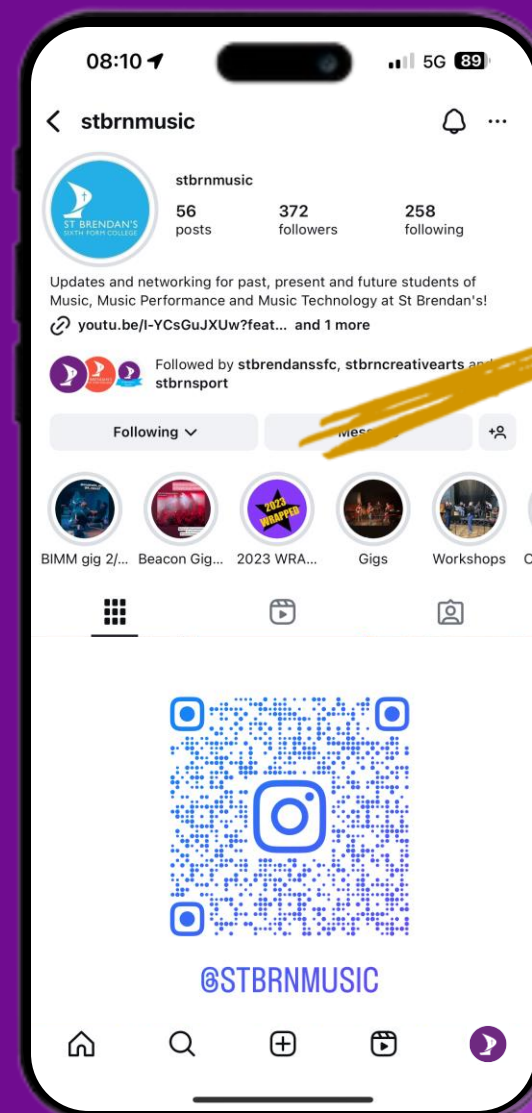
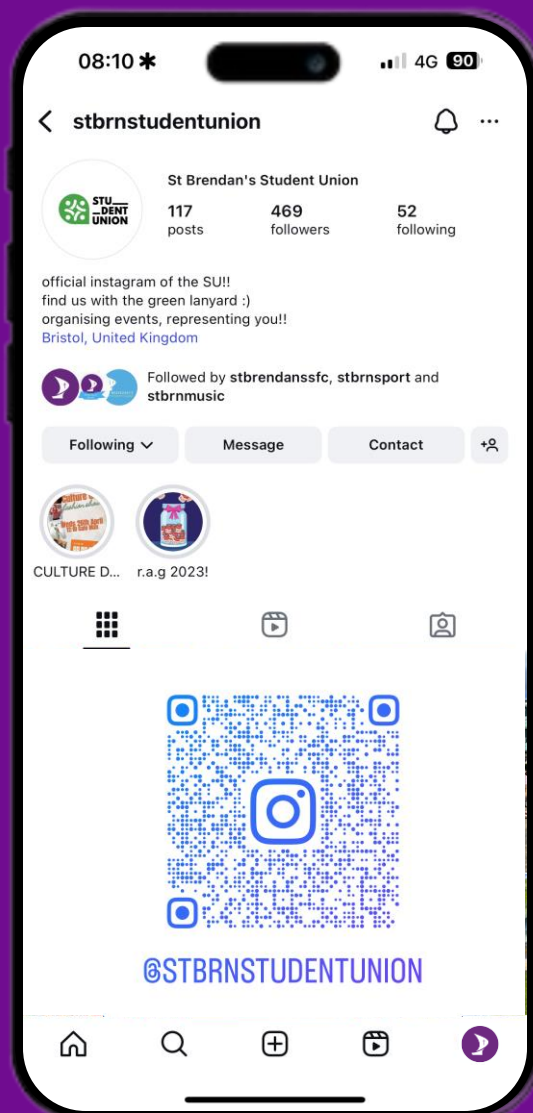
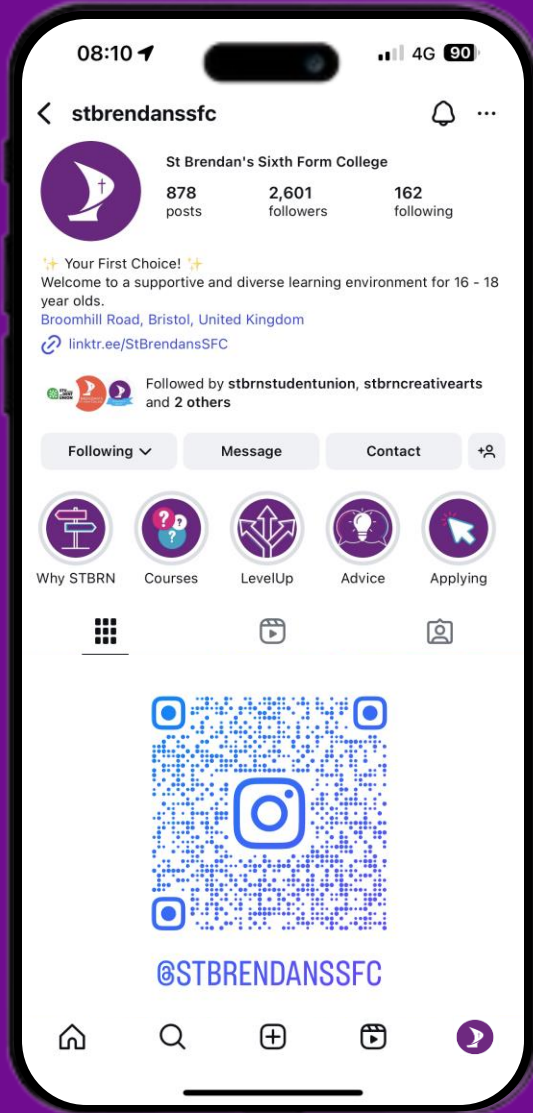
Throughout the first few weeks at college, you will take part in the following activities:

- Online Induction (Class of 2025 Teams Page) which includes
 - Digital Skills Induction
 - Transition to Sixth Form Course
 - Chance to tell us more about you and anything we need to know to support you
- Welcome Assembly
- LRC Tour
- Campus Tour ('The Scavenger Hunt')
- Visit the Chaplaincy
- Tutorial base room activities
- Subject based induction and assessment

FIRST WEEK

GET CONNECTED

LinkedIn



BRISTOL
BEACON



BRISTOL BEACON

You are here to flourish



Our Values



Thought for the Week

- A moment of reflection at start of Lesson 1
- Requirement of Catholic Colleges for reflection
- They fit our college values and have been written by both staff and students
- Develop self-reflection, opinions and empathy
- Inspirational and lead to action.





YEAR 12 STUDENT INDUCTION

SHAPE YOUR FUTURE



ST BRENDAN'S
SIXTH FORM COLLEGE

SCAN THE QR CODES

GET CONNECTED

LinkedIn

