



YEAR 13 STUDENT INDUCTION

SHAPE YOUR FUTURE



ST BRENDAN'S
SIXTH FORM COLLEGE



WELCOME BACK!



WELCOME BACK!



Marian Curran
Principal



David Beesley
Vice Principal



Vicki Haigh
Assistant Principal



Tanya Schottlander
Head of Student
Wellbeing & Progress



Bea Honap-Baker
Director of Faculty



Jayne Manley
Director of Faculty



Sophie Preece
Director of Faculty



The Time to Act is NOW!





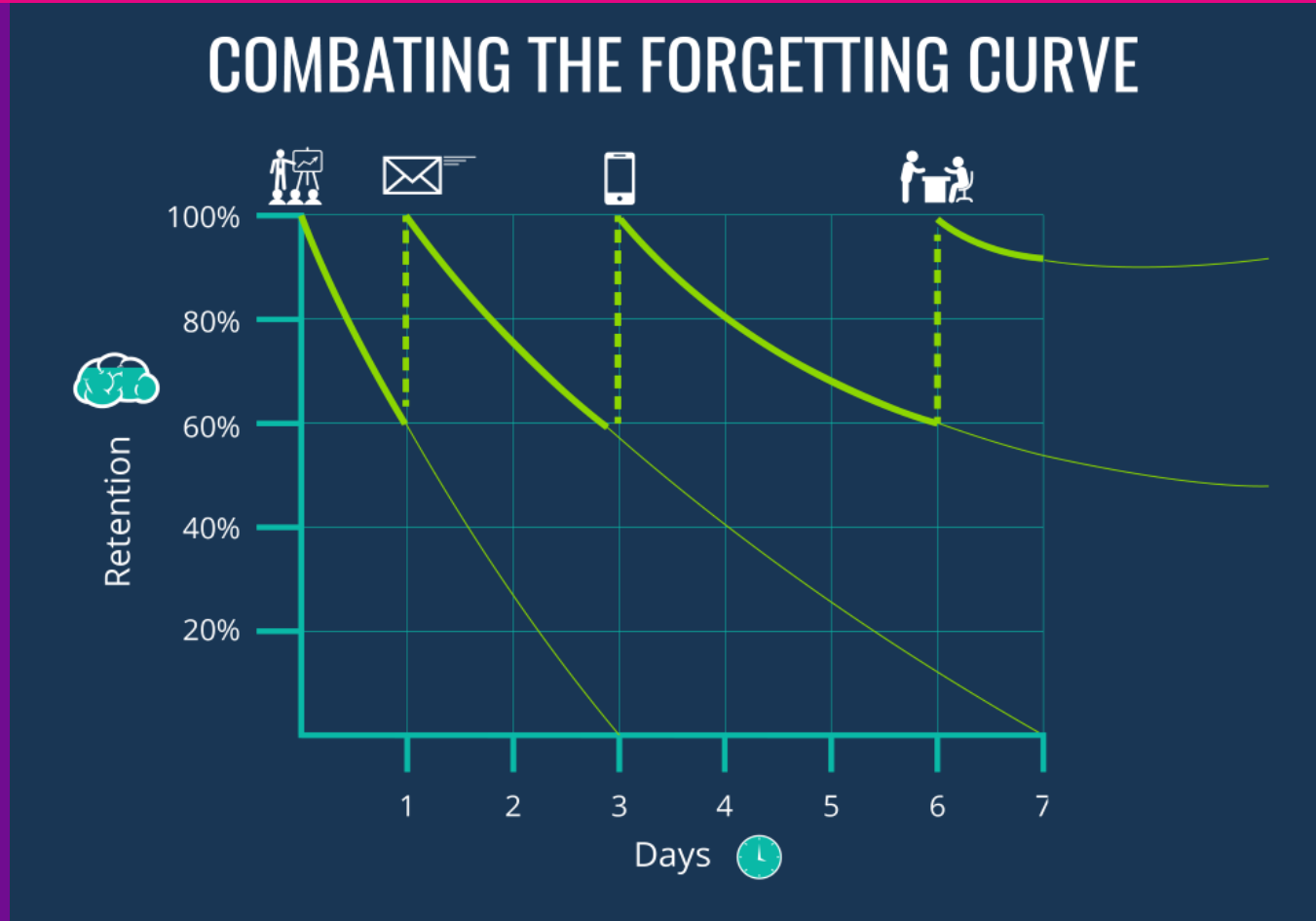
Countdown to Exams

Exam Type	Start Date	How far away?
Mock 1	WC 24th November	13 Weeks
Mock 2	WC 23rd February	25 Weeks
Final Exams	WC 4th/11th May	34-35 Weeks

You are not at the start of a two-year course anymore. You are in the final stretch.

Every week counts.

Why You Forget – and How to Beat It



***If you're not revisiting what you've learned, you're forgetting it.
Studying now is not optional – it's essential.***

Stand Up If You.....

Stay standing if you've already planned your weekly study time.

Stay standing if you know when your next mock is and what you need to revise.

Stay standing if you've looked at your weakest subject and made a plan to improve.

Stay standing if you've used the LRC Study Hub or Academic Coaching.

Stay standing if you've done any independent study this week.

Stay standing if your attendance was 85% or higher overall last year

Stand Up If You.....

- *If you are sat down then this is your wake-up call.*
- *You've got time – but not much.*
- *The good news? You're not alone.*
- *We have support ready but you have to be prepared to make the first move.*

Student Support

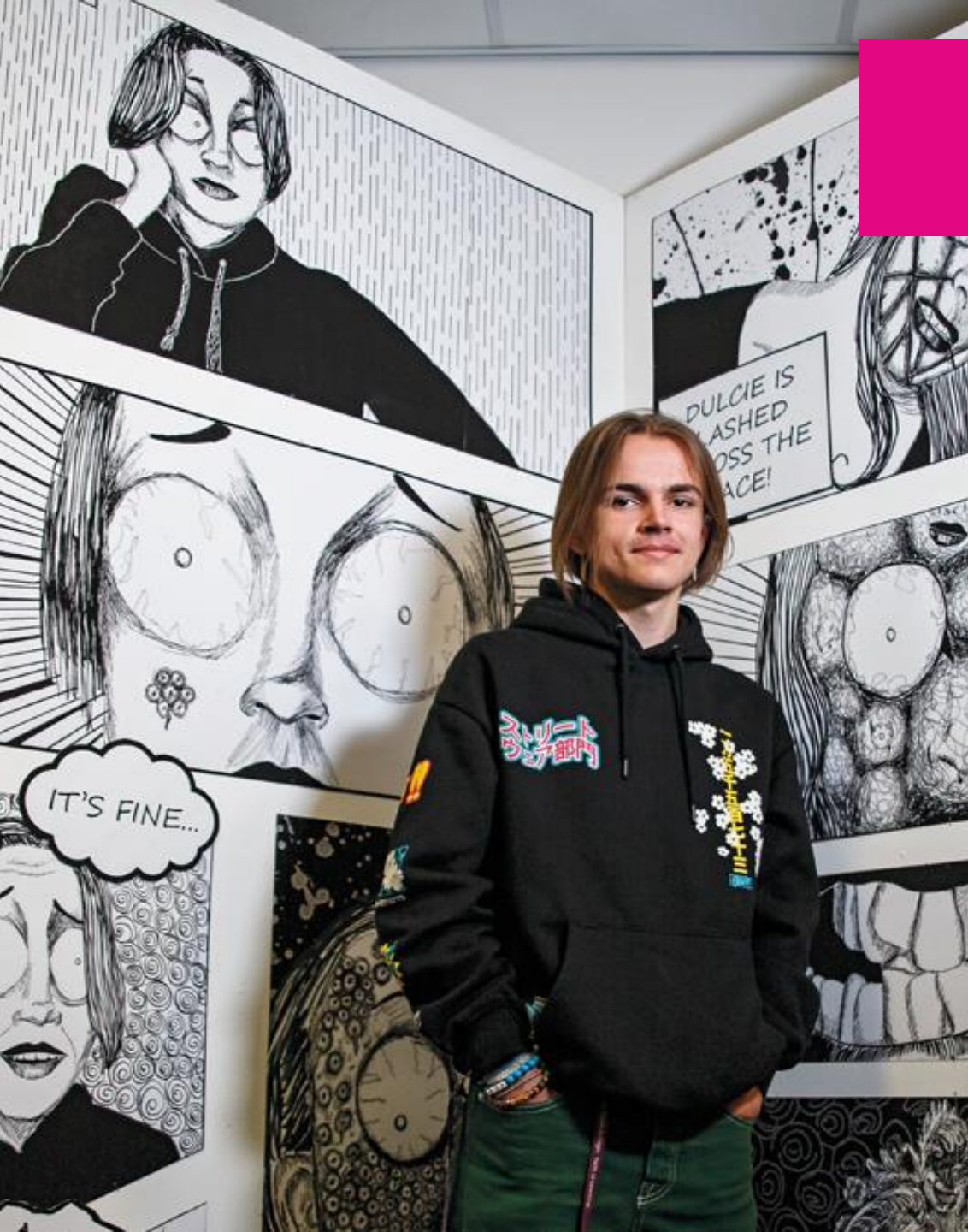


- Progress Tutors
- Attendance Officer
- Careers
- Inclusive Learning
- Welfare
- College Nurse
- Student Welfare & Engagement Assistants
- Safeguarding
- Prevent
- Bursary
- Transport
- Free college meals
- Academic Coaching
- LRC Study Hub
- Chaplain



9 Keys to Success

1. Study hard & aim high
2. Attend 100% of your classes & be on time
3. Behave appropriately and treat everyone with respect
4. Bring the right equipment to college
5. Only book holiday outside of term time



9 Keys to Success

- 6. Be proud of your work and & meet deadlines
- 7. Limit your part-time work to 8 hours per week
- 8. Engage in Enrichment activities & get involved!
- 9. Create a safe environment:
Wear your lanyard and ID Badge!

A Culture of Positive Engagement...The 3 C's

CONNECTEDNESS

- Ensuring students have a sense of belonging and connectedness to their environment. An environment that is 'safe' for you all to grow and develop.
- Your behaviour and approach to decision making is key

COMMUNICATION

- Ensuring students are communicated with effectively, with respect and with consistency
- Our expectations are clear and consistent – you may not get it right first time, but we will support you to correct mistakes and learn from them

CHOICE MAKING

- Ensuring students experience a sense of control of their circumstances through choice making opportunities.

Student Expectations

- Our expectations are to treat you like a young adult and an individual
- Your expectations are to be here and to be on time
 - If you are late, knock and wait
- Lanyards must be worn at all times – staff and students
- Phones and headphones out of sight in lessons *(unless permission has been given)*
- Only water in the classroom and fill up bottles beforehand
- Behaviour is exemplary, at all times – no excuses
- Treat everyone with respect
- Aim to use the toilet at break and lunchtimes rather than during lessons, if you do leave the classroom – phones are left and lanyards are on.

Student Expectations

- Students will do around 4-5 hours independent study per week

- MADE UP OF THREE ELEMENTS :

FLIPPED LEARNING

Reading / watching videos / preparation work for lessons

CORE TASKS

Practice tasks: questions / essays / presentations / assignments / projects

DIRECTED IMPROVEMENT WORK (DIRT)

Actions necessary to achieve your targets.

Why is ATTENDANCE so important?

When a student misses just...	That equals...	Student's attendance will be...	Grade
1 day each fortnight	16.5 days per year	90%	1 grades below target
1 day a week	33 days per year	80%	2 below target

Give yourself a chance to succeed...

A day here or there does not seem much but every day counts.

Why is PUNCTUALITY so important?

If a student is late by.....	Each week that equals...	Which is...
1 minute each lesson	20 minutes of learning lost	Nearly 2 days a year
10 minutes each day	50 minutes of learning lost	4 days a year
20 minutes each day	1 hr 40 mins of learning lost	8 days a year

Give yourself a chance to succeed...

Every minute counts

ATTENDANCE FOCUS – times have changed...

Attendance Band	Action
93-85%	Check in with teachers and tutors
85-75%	More detailed check in, SMART Targets and catch-up plan (including additional timetabled sessions); removal of enrichment and aspects of bursary
75-65%	Serious Concern: Panel Review and final warning meeting. Attendance contract and supervised study. Removal of bursary*
Below 65%	Withdrawal from college

College is a safe place to be.

Abuse and harassment is unacceptable and will not be tolerated.

Let's have the conversation.



If you are worried about any of these issues please speak to your Personal Progress Tutor.

WHO CAN HELP YOU?



TANYA



VICKI



MICHELLE



KATY



LYNNE



SENSI



ELISHA



SARAH



CLARE



ZOE



CARLA

You are here to flourish



Our Values



Thought for the Week

- A moment of reflection at start of Lesson 1
- Requirement of Catholic Colleges for reflection
- They fit our college values and have been written by both staff and students
- Develop self-reflection, opinions and empathy
- Inspirational and lead to action.

