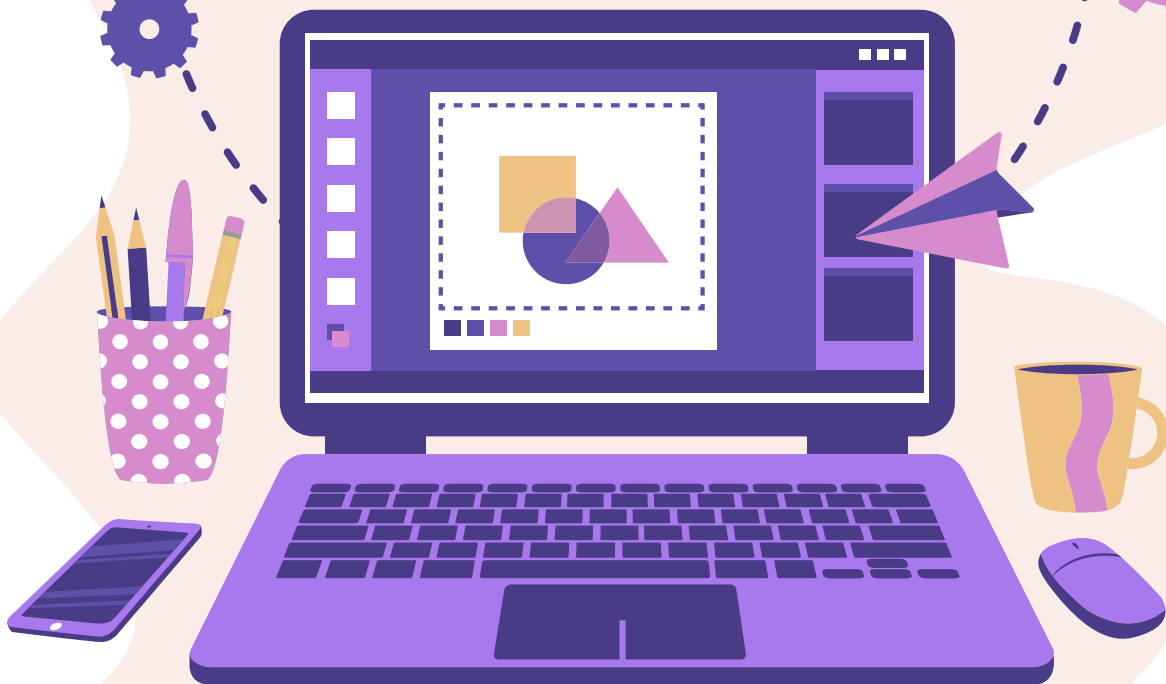




Initial Assessment

Information for Students
and Parents/Carers



At St Brendan's Sixth Form College developing literacy and numeracy skills is very important. The College uses a student friendly programme for assessment called **BKSB**. All post-16 providers assess for maths and English, including apprenticeships and recruitment agencies.



Dear Parents, Carers, and Students

At St Brendan's Sixth Form College we recognise the importance of continued improvement in literacy and numeracy.

As a mandatory entry requirement preceding enrolment, all new students are asked to complete Initial Assessments in maths and English (detailed instructions attached).

The results from these assessments provide Subject Teachers and Learning Development staff with critical information regarding any possible underlying learning support needs as well as a clear picture of each student's strengths and areas for improvement. Results from assessments are analysed and if they do not align with the student's original academic profile, contact will be made for an in-depth discussion.

The College utilizes a programme called BKSb for assessment which is a highly respected educational tool used throughout the country, and one which is both student and teacher friendly. Please support your son/daughter to complete the maths and English Initial Assessments independently to capture a picture of their skills levels by 4pm on Fri 4th September, before their first day in college.

It is important every student works diligently on each assessment to ensure that a true academic profile is created for the records and learning plans. (Please note that it is not necessary to take the Diagnostic Assessment at this time). Familiarisation with the navigation of the programme is also recommended.

Instructions are included, please assist your son/daughter to follow these instructions and complete the assessments within the deadline.

If you have any queries regarding Initial Assessment, please email bksb@stbrn.ac.uk.

Thank you.

The BKSb Team

Initial Assessments Maths & English

- Mandatory requirement for all new students proceeding to enrolment**
- Individual learning plans are created from these results**
- The results identify literacy/ numeracy strengths and weaknesses for Subject Teachers and Learning Development Staff**

Important Info

- Assessments are to be taken independently. If results do not align with the students original academic profile, contact will be made for an in-depth discussion
- Google is not allowed Neither is Siri, Alexa or any other digital assistant
- Please ensure that you complete **both** Maths & English Assessments

Helpful tips!

- Calculators and dictionaries are allowed
- Use a pen and paper to help yourself to work out answers to questions
- Each assessment will take around 15 - 20 minutes
 - It is important that you show the very best of your ability when completing the BSKB assessments

BKSB Smart Technology

- It is better to skip a question if you do not know than to guess a random answer
- Once you are finished you can simply close the programme
- The programme saves everything automatically, so if you get interrupted you can pick up where you left off when you next log in

Please complete your BKSB
maths and English Initial Assessments by:

**4pm on Friday 4th
September 2020**

(It is not necessary to take the Diagnostic Assessment at this time)
There is no need to email or print your results, the system saves everything automatically.

If you have any queries please email bksb@stbrn.ac.uk

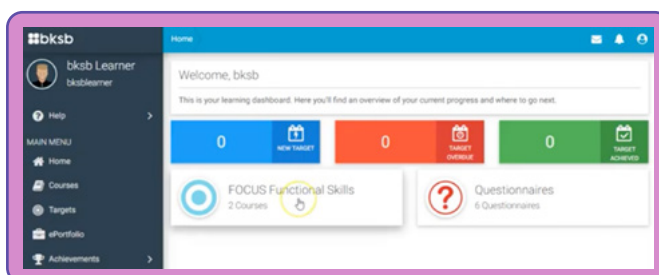
Getting Started

- Googling BKSB will not bring you the correct site you **must** use the web address
- The correct site bears the St. Brendan's logo
- Your **username** is your **student number** only (e.g. 201037)



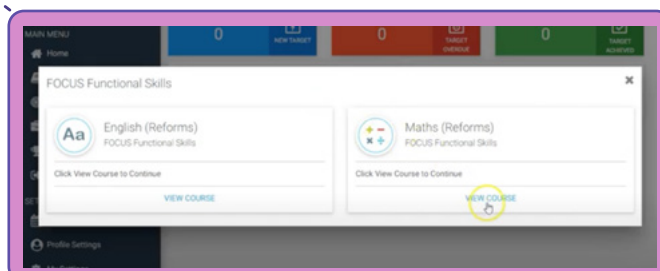
- Your default password is the word **password** (no capitals and no punctuation)
- You will be prompted to change your password when you first log in. We advise you to use one you will find memorable

Starting Your BKSB Assessment



1
Once you have logged in, click on the **Focus Functional Skills** button

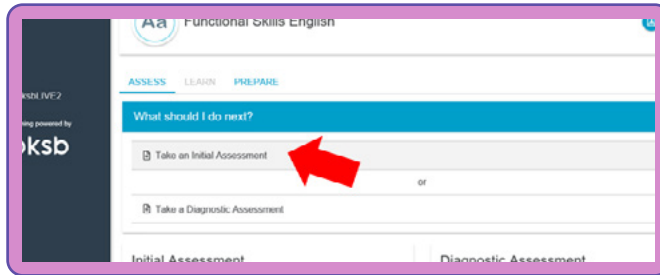
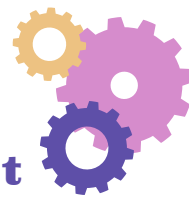
2
Click **View Course** on whichever course you fancy doing first



If you would prefer to watch this instructional video, click this link:
<https://www.youtube.com/watch?v=sRJ2NIsdXB8>



Taking Your BKSB Assessment

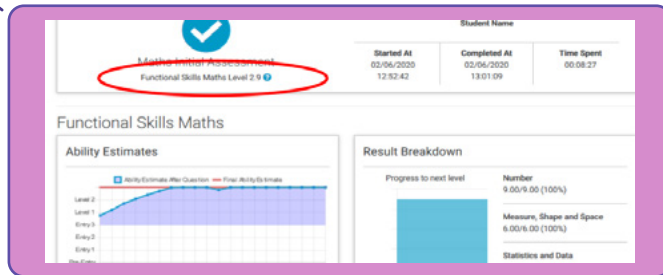


3

Click on **Take Initial Assessment** and follow instructions on screen to take your assessment

4

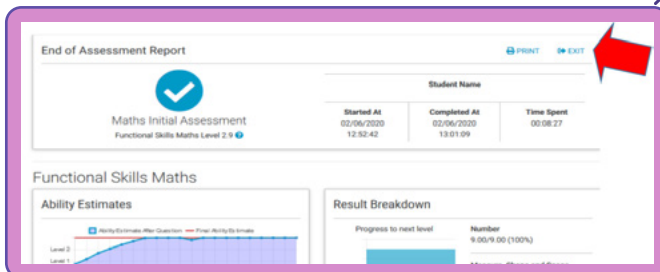
Your result is visible right away, in your **End of Assessment Report**. An explanation of your results is at the end of this document



You do **not need** to take the Diagnostic Assessment unless you wish for the programme to produce resources to help you in your maths and/or English. Please note it will take up to an hour to complete.



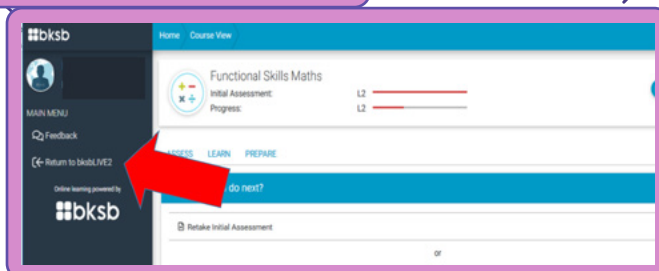
Completing Maths & English



5

Make sure you navigate back to the home screen ensuring both **Maths and English Assessments** are completed

Click the **exit** button at the top right to leave the assessment and click **Return to bksbLIVE2** on the left hand panel to return to the two courses



Once you have completed both Maths & English Assessments

BKSB Level	Equates to	Interpretation
Level 2	GCSE 4 grade and above	GCSE --> A Level student
Level 1	Grade 4 - 1	Only just achieved/ only just missed the 4 grade
Entry level 3	Key Stage 3	Average result if 4 grade at GCSE not yet achieved. Some specific skills gaps
Entry level 2	Key Stage 2	Serious skills gaps
Entry level 1	Key stage 1	Numerous serious skills gaps
Pre-Entry Level	Pre-entry level (pre-education level)	You've either never learned these things, or made little effort on the assessment.

You do not need to print or email your results as they are all automatically saved for you

Each of these levels is fine-graded so you can see a more detailed account of your working level. E.g. if you score Level 1.8 you know you are closer to Level 2 than Level 1. Level 2.9 is the highest possible level you can achieve in these assessments.

If you feel that your level after assessment does not match your own ability level, you may retake the assessment

If the college feels your result does not match the rest of your academic profile, you may be asked to retake the assessment. We will also speak with you investigating any potential learning needs you may have. An appropriate support system may then be put in place.

Double Checking Your Results

Click on the middle blue button on the top right hand side



Log-in and select Focus Functional Skills from the Home screen. Then select either maths or English

Your Initial Assessment score looks like this

